



PONTOON RACK KIT

Installation Instructions

Standard Pontoon Rack Kit LNPRKS

For 1800 Wide & 2400-4800 Cantilever

IN BUNDLE – LNPRK1

- (4) 3" sq. Upright Brackets LNPRK3
- (16) 1/2 x 2-1/2 Carriage Bolts NB12212C
- (16) 1/2 Nuts – NN12S

OPTIONAL

- (2) 2" x 12" x 14' Boards LNPRK2

4600 HL Pontoon Rack Kit LNPRKM46

IN BUNDLE – LNPRKM6

- (4) 2" x 3" sq. Upright Brackets LNPRK6
- (16) 1/2 x 2-1/2 Carriage Bolts NB12212C
- (16) 1/2 Nuts NN12S

OPTIONAL

- (2) 2" x 12" x 14' Boards LNPRK2

Medium Pontoon Rack Kit LNPRKM

For 1800, Rail, 1600-3800 HL & 3200-4500 Hefty

IN BUNDLE – LNPRKM1

- (4) 2" x 3" sq. Upright Brackets LNPRK5
- (16) 1/2 x 2-1/2 Carriage Bolts NB12212C
- (16) 1/2 Nuts NN12S

OPTIONAL

- (2) 2" x 12" x 14' Boards LNPRK2

Large Pontoon Rack Kit LNPRKL

For 5600-6600 HL, 6000-12,000 Hefty

IN BUNDLE – LNPRKL1

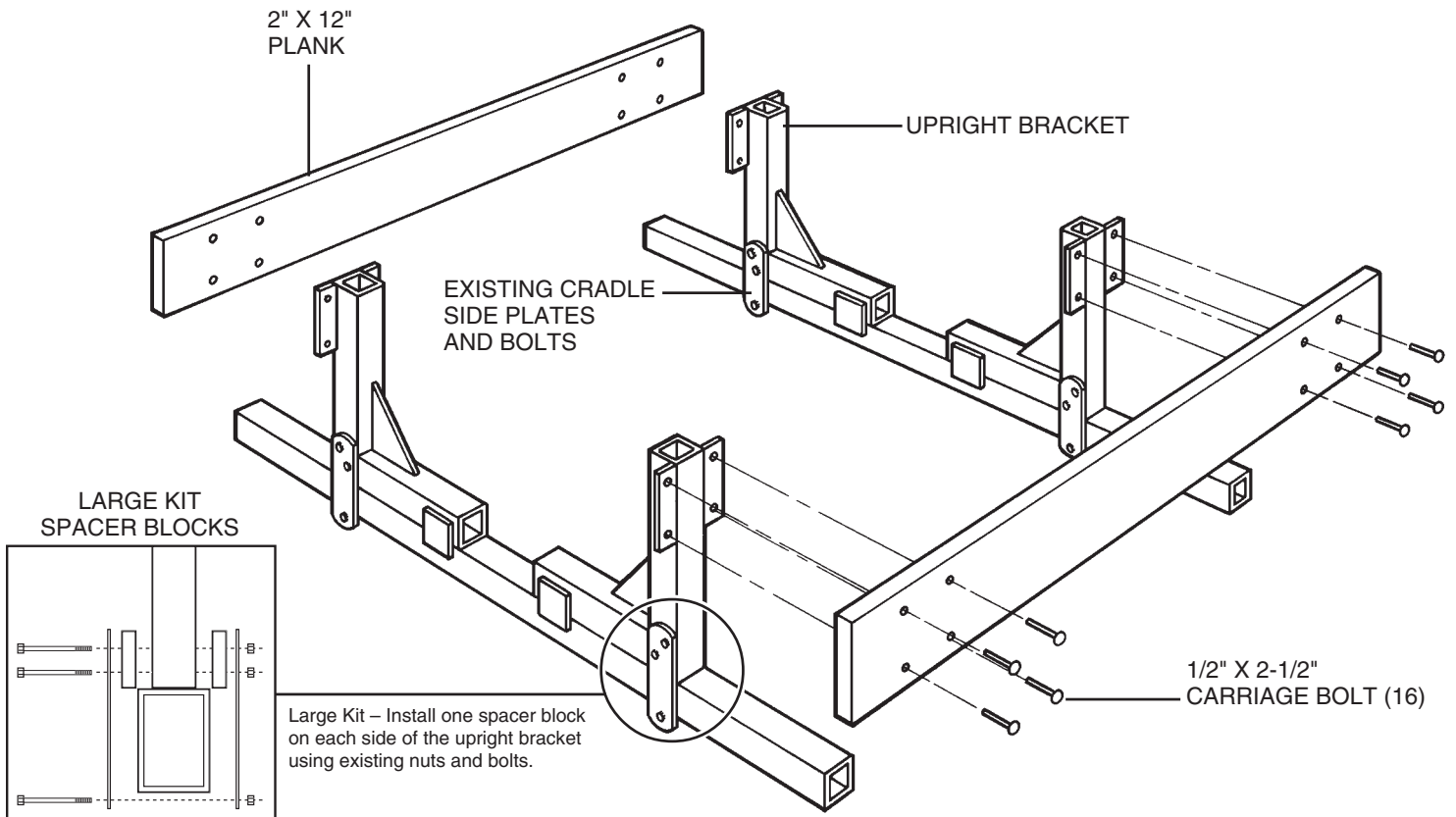
- (4) 3" sq. Upright Brackets LNPRK3
- (16) 1/2 x 2-1/2 Carriage Bolts NB12212C
- (16) 1/2 Nuts NN12S
- (8) Spacer blocks LNPRK4

OPTIONAL

- (2) 2" x 12" x 14' Boards LNPRK2

INSTALLATION

1. Use 2" x 12" planks, 14' long, to properly support the pontoon deck.
2. Install pontoon rack upright bracket.
3. Install planks.
 - A. Measure from the bottom of the pontoon to the bottom of the pontoon deck and add approximately 1".
 - B. Position the planks up to the upright bracket using measurement from a. The weight of the pontoon must be centered on the lift. Most pontoons are heavy at the back (motor, etc). Pontoon may need to be forward on the lift to balance.
 - C. Mark holes and drill 9/16" dia.
 - D. Mount planks.
 - E. Measure distance between pontoon tanks and adjust uprights to be centered. (The outside measurement from plank to plank is 2" less than between tanks).

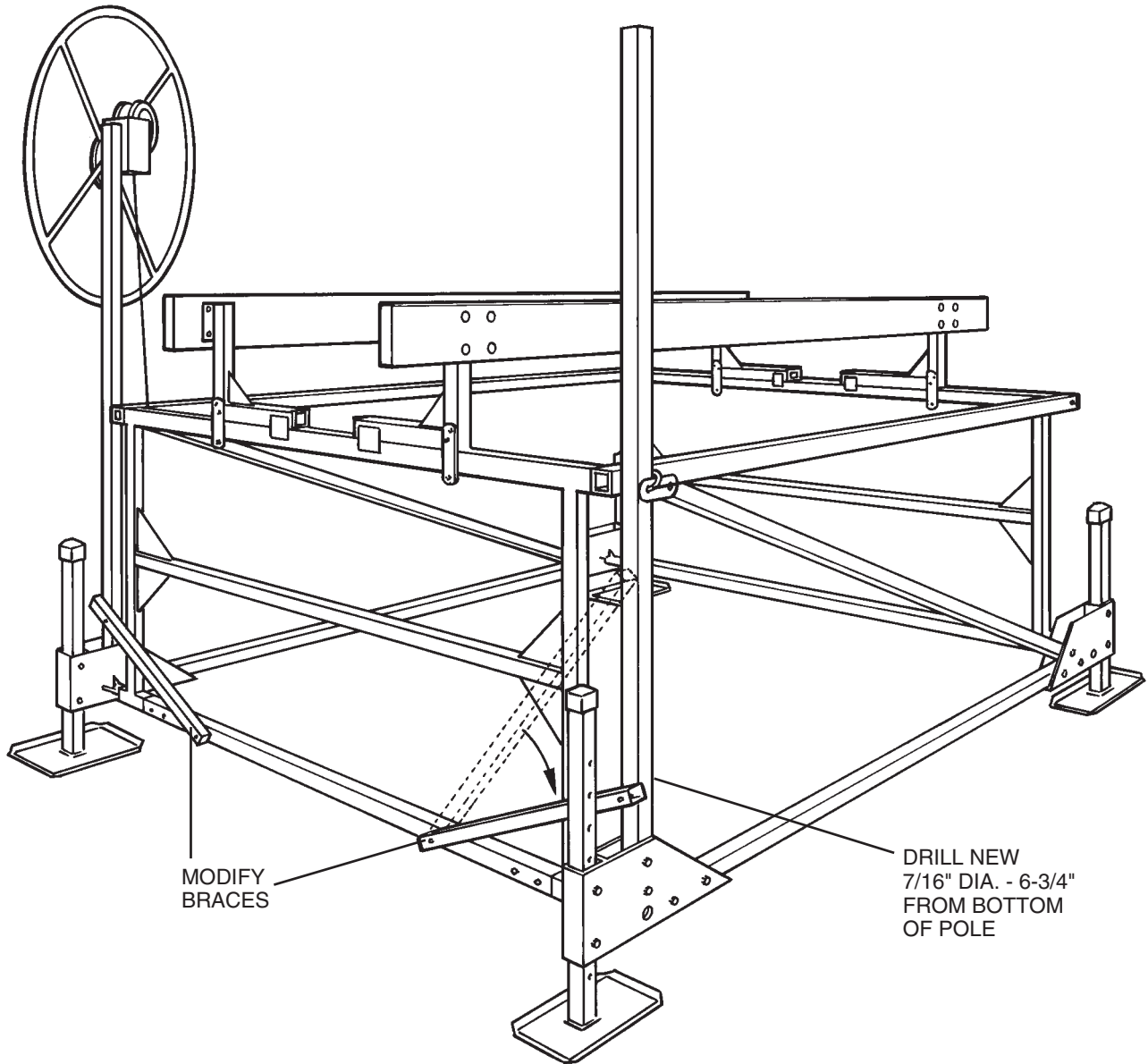
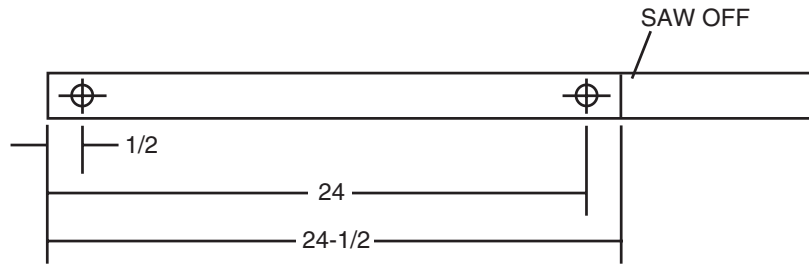


"Quality Since 1971"

HEWITT MACHINE & MFG, INC. Box 111 Nicollet, MN 56074 (507) 225-3421

www.hewitt-roll-a-dock.com e-mail: info@hewitt-roll-a-dock.com

4. Change front pole braces.
 - A. Remove and modify braces.
 - B. Drill 7/16" dia. hole 6-3/4" from bottom of vertical pole.



"Quality Since 1971"